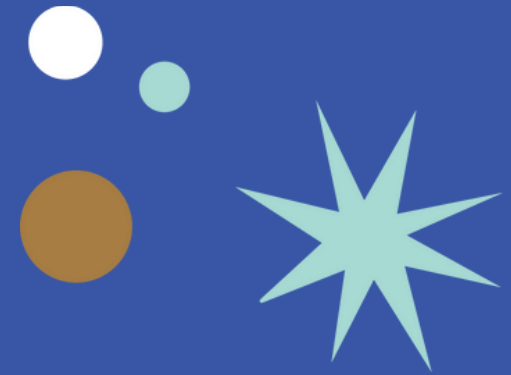


Festive Fridays

NOV 29 | DEC 6 | DEC 13 | DEC 20

THE FOLLOWING BUSINESSES WILL BE OPEN UNTIL 8PM OR LATER



- Ake's Place
- Asiana Noodle Shop
- Ben & Jerry's
- Bertha Church Intimates*
- Black Cap Coffee & Bakery*
- Burlington Paint and Sip Studio
- Church Street Tavern
- CVS
- Dear Lucy
- EB Strong's Prime Steakhouse
- Ecco Clothes
- Fatface
- Float On
- Flora & Fauna
- Frog Hollow*
- Gaku Ramen
- Golden Hour Gift Co*
- Halvorson's Upstreet Cafe
- Harbour Thread
- Homeport
- Honey Road
- Insomnia Cookies
- Ken's Pizza and Pub
- Kiss the Cook
- Lake Champlain Chocolates
- Leunig's Bistro & Cafe
- Maven
- Outdoor Gear Exchange
- Pascolo Ristorante
- Phoenix Books*
- Pokeworks
- Ri Ra Irish Pub
- Saratoga Olive Oil
- Ten Thousand Villages
- The Store*
- Tradewinds
- Vermont Distillers & Smugglers' Notch Distillery*
- Vermont Flannel Company*
- Whim

*OPEN UNTIL 7PM



CHURCH STREET
MARKET PLACE